

STACKED RIGHT ANGLE DIP SOLDER D-SUB



8091 SERIES. For PCB Solder. Right Angle DIP Solder D-Sub

Features

- Different pin configuration
- Meets ATX specification and requirements
- Easy to use. High reliability
- Insulator Material: Glass filled polyester UL 94V-0
- Contact Material: Phosphor bronze
- Spring: Phosphor bronze
- Current rating: 3 A AC, DC
- Voltage rating: 250V AC, DC
- Temperature rating: -25°C to 105°C
- Contact resistance: 20 mΩ min.
- Insulation resistance: 5000 MΩ min.
- Withstanding voltage: 1000 V AC/min.

Dimensional Information

| (T) Plating Options |
|------------------------------------|
| T = 3. Gold flash over 50μ nickel. |
| T = 5. 15μ" gold over 50μ" nickel |
| T = 6. 30μ" gold over 50μ" nickel |

| (D) Connector Body Height Option |
|----------------------------------|
| D=1. E = 15.88mm |
| D=2. E = 19.05mm |
| D=3. E = 22.86mm |

| (E) Screw Lock Variations |
|--|
| C = 1. Riveted ground hooks pre-loaded #4.40 UNC Hex screws (standard) |
| C = 0. Riveted ground hooks with #4.40 UNC open |

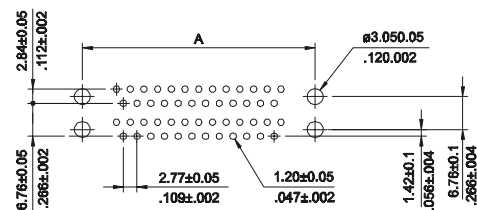
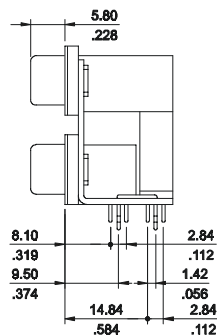
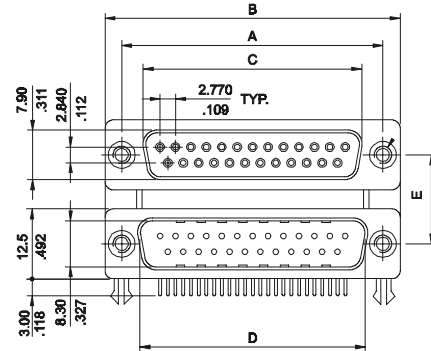
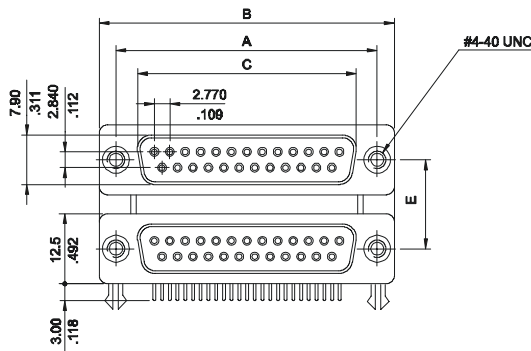
| (B) Circuit Size |
|------------------------|
| 1. = 9 to 9 circuits |
| 2. = 15 to 15circuits |
| 3. = 25 to 25circuits |
| 4. = 9 to 25circuits |
| 5. = 25 to 9 circuits |
| 6. = 25 to 15 circuits |
| 7. = 37 to 37 circuits |

| (C) Connector Configuration | | |
|-----------------------------|------------|---------------|
| | Upper con. | Inferior con. |
| 1. | Receptacle | Receptacle |
| 2. | Plug | Receptacle |
| 3. | Receptacle | Plug |
| 4. | Plug | Plug |

8091 – T B C D E Series

| Ordering Information |
|---------------------------------|
| T. Plating Options |
| B. Circuit Size |
| C. Connector configuration |
| D. Connector body height option |
| E. Screw lock variations |

Unit: $\frac{\text{mm.}}{\text{Inch.}}$



Recommended Hole Pattern

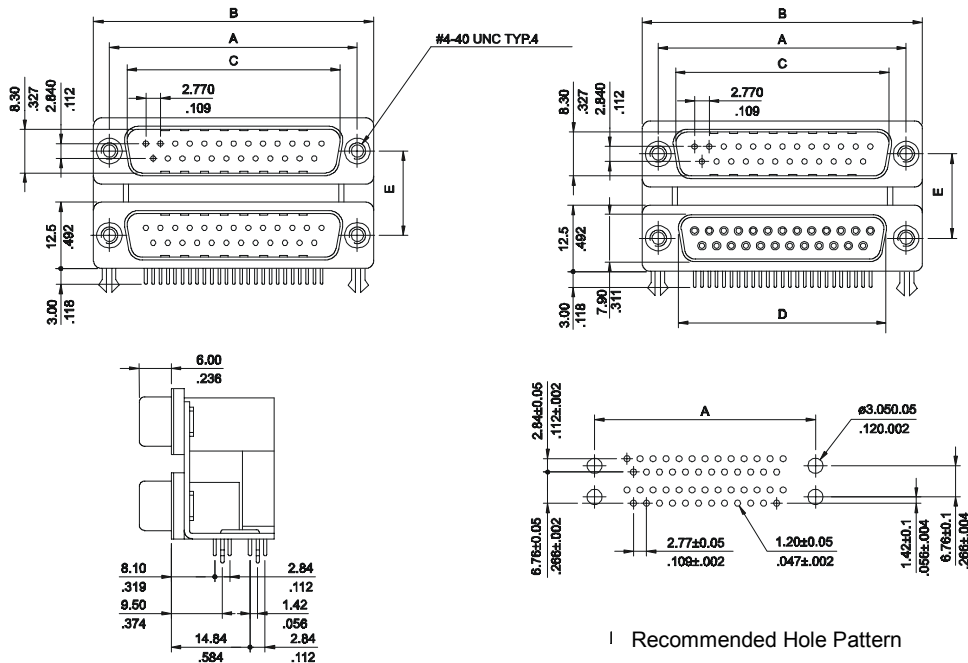
STACKED RIGHT ANGLE DIP SOLDER D-SUB



8091 SERIES. For PCB Solder. Right Angle DIP Solder D-Sub

● Plug to Plug and Plug to socket

| Part Number | Dim. A | Dim. B | Dim. C | Dim. D | Dim. E |
|--------------------|---------------|---------------|---------------|---------------|----------------|
| 8091 – T1*11 (9V) | 24.99 (0.984) | 30.80 (1.213) | 16.92 (0.666) | 16.92 (0.666) | 15.880 (0.625) |
| 8091 – T2*11 (15V) | 33.32 (1.312) | 39.10 (1.539) | 25.25 (0.994) | 25.25 (0.994) | |
| 8091 – T3*11 (25V) | 47.04 (1.852) | 53.00 (2.087) | 38.96 (1.534) | 38.96 (1.534) | |
| 8091 – T7*11 (37V) | 63.50 (2.500) | 69.40 (2.732) | 55.42 (2.182) | 55.42 (2.182) | 19.050 (0.750) |
| 8091 – T1*21 (9V) | 25.00 (0.984) | 30.80 (1.213) | 16.92 (0.666) | 16.92 (0.666) | |
| 8091 – T2*21 (15V) | 33.32 (1.312) | 39.10 (1.539) | 25.25 (0.994) | 25.25 (0.994) | |
| 8091 – T3*21 (25V) | 47.04 (1.852) | 53.00 (2.087) | 38.96 (1.534) | 38.96 (1.534) | 22.860 (0.900) |
| 8091 – T7*21 (37V) | 63.50 (2.500) | 69.40 (2.732) | 55.42 (2.182) | 55.42 (2.182) | |
| 8091 – T1*31 (9V) | 24.99 (0.984) | 30.80 (1.213) | 16.92 (0.666) | 16.92 (0.666) | |
| 8091 – T2*31 (15V) | 33.32 (1.312) | 39.10 (1.539) | 25.25 (0.994) | 25.25 (0.994) | 22.860 (0.900) |
| 8091 – T3*31 (25V) | 47.04 (1.852) | 53.00 (2.087) | 38.96 (1.534) | 38.96 (1.534) | |
| 8091 – T7*31 (37V) | 63.50 (2.500) | 69.40 (2.732) | 55.42 (2.182) | 55.42 (2.182) | |



● Socket to Socket and Socket to plug

| Part Number | Dim. A | Dim. B | Dim. C | Dim. D | Dim. E |
|--------------------|---------------|---------------|---------------|---------------|----------------|
| 8091 – T1*11 (9V) | 25.00 (0.984) | 30.80 (1.213) | 16.92 (0.666) | 16.33 (0.643) | 15.880 (0.625) |
| 8091 – T2*11 (15V) | 33.32 (1.312) | 39.10 (1.539) | 25.25 (0.994) | 24.66 (0.971) | |
| 8091 – T3*11 (25V) | 47.04 (1.852) | 53.00 (2.087) | 38.96 (1.534) | 38.38 (1.511) | |
| 8091 – T7*11 (37V) | 63.50 (2.500) | 69.40 (2.732) | 55.42 (2.182) | 54.80 (2.157) | 19.050 (0.750) |
| 8091 – T1*21 (9V) | 25.00 (0.984) | 30.80 (1.213) | 16.92 (0.666) | 16.33 (0.643) | |
| 8091 – T2*21 (15V) | 33.32 (1.312) | 39.10 (1.539) | 25.25 (0.994) | 24.66 (0.971) | |
| 8091 – T3*21 (25V) | 47.04 (1.852) | 53.00 (2.087) | 38.96 (1.534) | 38.38 (1.511) | 22.860 (0.900) |
| 8091 – T7*21 (37V) | 63.50 (2.500) | 69.40 (2.732) | 55.42 (2.182) | 54.80 (2.157) | |
| 8091 – T1*31 (9V) | 24.99 (0.984) | 30.80 (1.213) | 16.92 (0.666) | 16.33 (0.643) | |
| 8091 – T2*31 (15V) | 33.32 (1.312) | 39.10 (1.539) | 25.25 (0.994) | 24.66 (0.971) | 22.860 (0.900) |
| 8091 – T3*31 (25V) | 47.04 (1.852) | 53.00 (2.087) | 38.96 (1.534) | 38.38 (1.511) | |
| 8091 – T7*31 (37V) | 63.50 (2.500) | 69.40 (2.732) | 55.42 (2.182) | 54.80 (2.157) | |