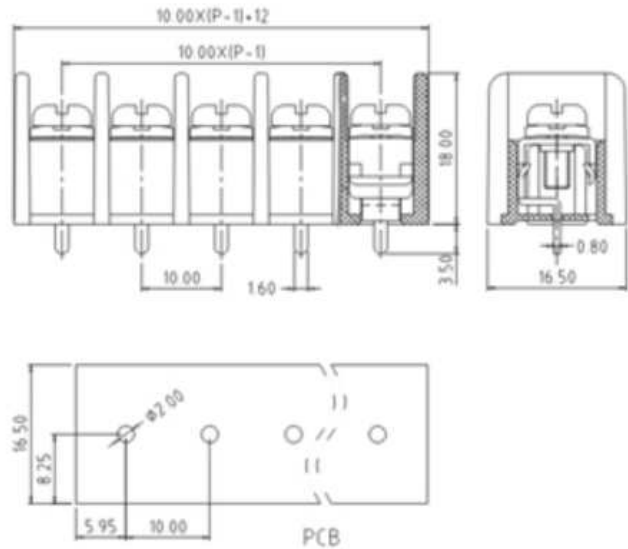


B100-02



技术数据

Technical data

间距	Pitch	10.0mm
认证	Approval	Applying
额定电压	Rated voltage	300V
额定电流	Rated current	25A
线径	Wire range	12-22AWG
螺丝	Screw	M3.5
PCB孔直径	PCB hole Dia	$\phi 2.0\text{mm}$

料号 Part Number

B100-02-2P
B100-02-3P
B100-02-4P
B100-02-5P
B100-02-6P
B100-02-7P
B100-02-8P
B100-02-9P
B100-02-10P
B100-02-11P
B100-02-12P